

BADASS TEXAS 2024 HALF

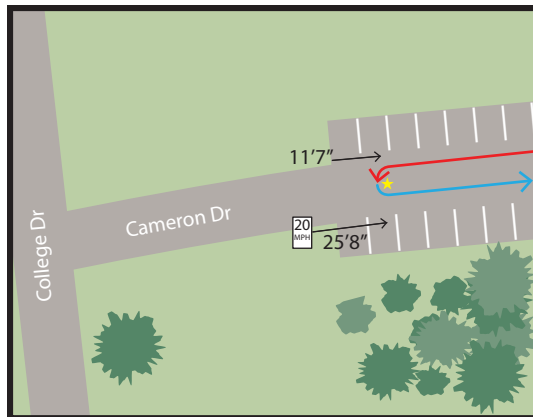
Course Description:

Start on Austin Ave, turn NW on 3rd St, turn NE on Washington Ave, turn NW onto University Parks Dr in northbound lanes, continue NW into parking lot and onto running path parallel to Brazos River, continue NW on running path under Herring Ave and toward Redwood Shelter, continue N on running path until it ends and take ramp onto Cameron Park Dr, continue NW on Cameron Park Dr, continue N and W past Lawsons Point, N onto Cameron Park Dr, NE into Circle Point, continue around circle drive, W exiting Circle Point, N on Cameron Park Dr, E into Mouth of Bosque, continue around circle drive, W exiting Mouth of Bosque, N on Cameron Park Dr, E into Emmons Cliff, then SW exiting Emmons Cliff, NW on Cameron Park Dr, N and E into Lovers Leap, continue E on running path, run E, then N, then W on running path, exit running path and take direct path to traffic circle, exit Lovers Leap following traffic circle, continues SW on Lovers Leap Rd, continue W on Meridan Ave, N on Mockingbird Ln, E on Powell Dr, SE, then N on Highlander, N and W on Cameron Dr, U Turn, E and S on Cameron Dr, E, S, then W on Highland, W on Powell Dr, S on Mockingbird Ln, E on Meridan Dr, continue E on Lovers Leap Road, E on Cameron Park Dr, continue E then S on Cameron Park Dr, S on Robin Rd, E on Baker, SE on Cameron Park Dr, continue SE under Herring Ave Bridge, continue SE onto University Parks Dr, SW on Washington Ave, SE on 3rd St, S on Austin Ave to Finish.

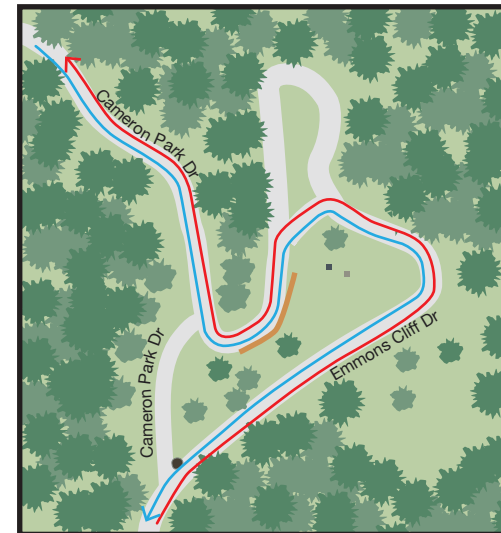
Lane Use Restrictions:

Run with normal traffic flow with cones along center line on University Parks Dr, Cameron Park Dr, Lovers Leap Road, Meridan Ave, Mockingbird Ln, Powell Dr, Highlander, and Cameron Dr.
When running on Emmons Cliff Dr, Mouth of Bosque, and Circle Point Dr runners should run with normal traffic flow on the "right" side of roadway.
When running around one-way traffic circles restrictions are removed.
No restrictions on Robin Rd, Baker, Washington Ave or 3rd St.

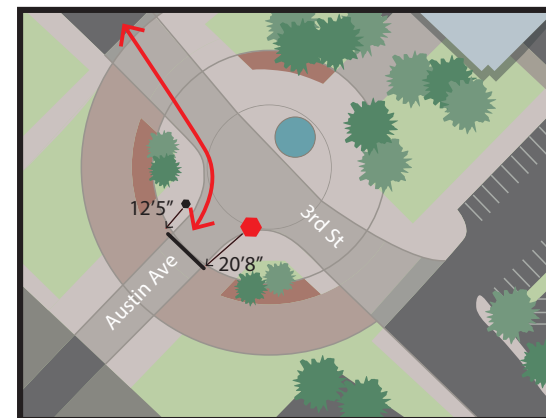
This 21.0975KM course in Waco Texas was measured on May 18, 2024 by Logan A Burgess using the full width of roadway and trail and following the shortest possible route - Map Not to Scale - Restrictions as noted - Measured points are described on subsequent page



U TURN DETAIL



EMMONS CLIFF DETAIL



START / FINISH DETAIL

Logan A Burgess
Measured by Logan Burgess
USATF / RRTC Course Certifier
AIMS / World Athletics "A" Measurer
loganaburgess@yahoo.com
214.803.7800

START / FINISH