



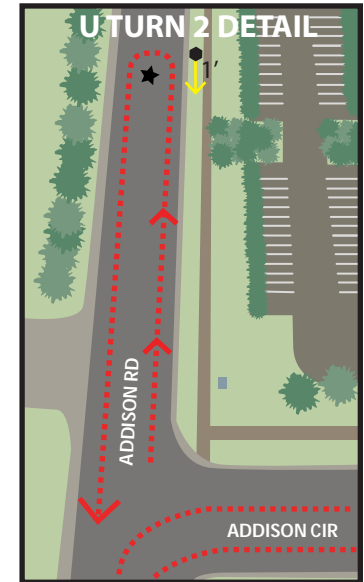
Hotcake Hustle 10K

10 km - USATF Certification TX18117LAB - Addison, TX

Effective December 7, 2018 to December 31, 2028

Measured by Logan Burgess on December 1, 2018

Map not to Scale - Restrictions as noted



Start / Finish - (N32 57.685 W96 49.729) - Addison Circle Rd - 57' E of W edge of Addison Conference Theatre Centre and even with lamp post #146 on S side of road

Mile 1 - (N32 57.383 W96 50.498) - Westbound Arapaho Rd at E side of storm drain between 3rd and 4th lamp post from W end of bridge

U Turn - (N32 57.345 W96 51.059) - Arapaho Rd just E of Business Ave - 29' E of lamp post 3663232 and 43'4" W of DART stop #31110

Mile 2 - (N32 57.377 W96 50.623) - Eastbound Arapaho Rd - 24' W of NO PARKING sign at W end of bridge on S side of road

Mile 3 - (N32 57.641 W96 49.786) - Northbound Addison Rd just S of Addison Circle Rd - 15' S of utility pole 2205 47_ 6789

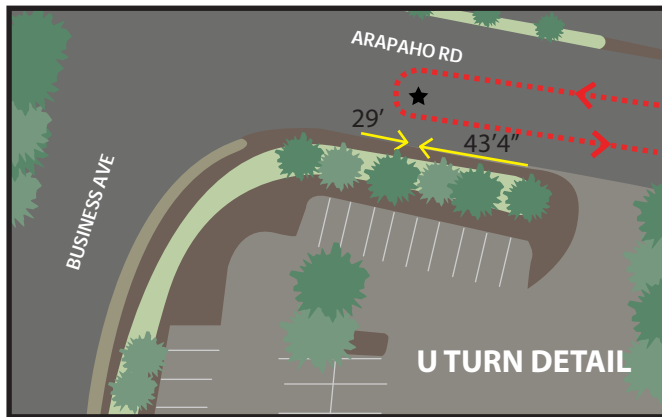
U Turn 2 / 5K - (N32 57.732 W96 49.787) - Addison Rd just N of Addison Circle Rd - 1' S of utility pole 2205 47_ 679_

Mile 4 - (N32 57.381 W96 50.388) - Westbound Arapaho Rd on bridge - 51' W of 4th lamp post W of blue vertical post on W side of bridge

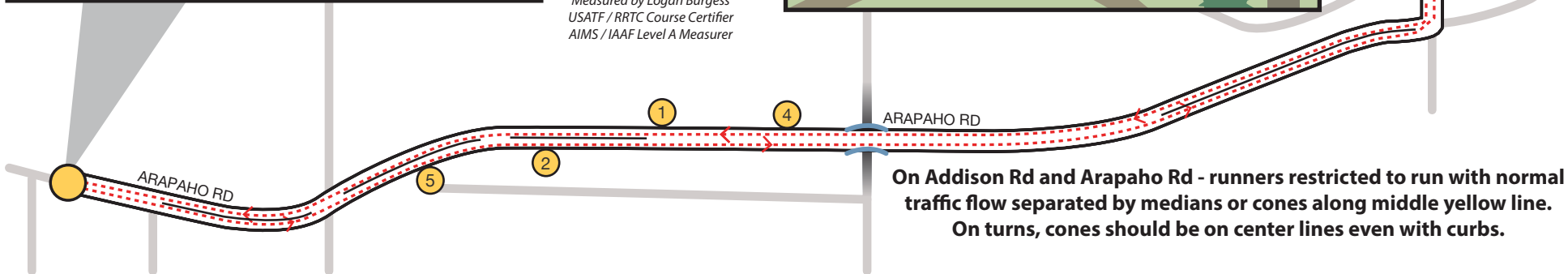
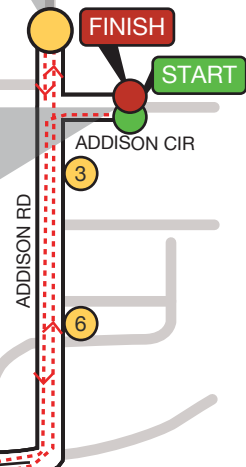
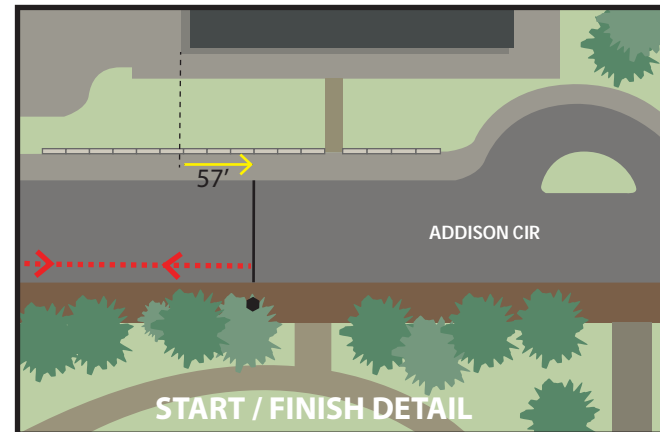
Mile 5 - (N32 57.363 W96 50.727) - Eastbound Arapaho Rd at Storage Facility Exit just E of Surveyor Blvd - 36' W of STOP sign

Mile 6 - (N32 57.547 W96 49.782) - Northbound Addison Rd at Broadway St - even with traffic control post at NE corner of intersection

Start on Addison Cir, run W, turn S on Addison Rd, turn W on Arapaho Rd, U turn, run E on Arapaho Rd, turn N on Addison Rd, pass Addison Circle and continue N to U turn, run S on Addison Rd, turn W on Arapaho Rd, U turn, run E on Arapaho Rd, turn N on Addison Rd, turn E on Addison Cir to Finish.



Map Not To Scale
WGS84 GPS Datum
Logan Burgess
Measured by Logan Burgess
USATF / RRTC Course Certifier
AIMS / IAAF Level A Measurer



On Addison Rd and Arapaho Rd - runners restricted to run with normal traffic flow separated by medians or cones along middle yellow line. On turns, cones should be on center lines even with curbs.